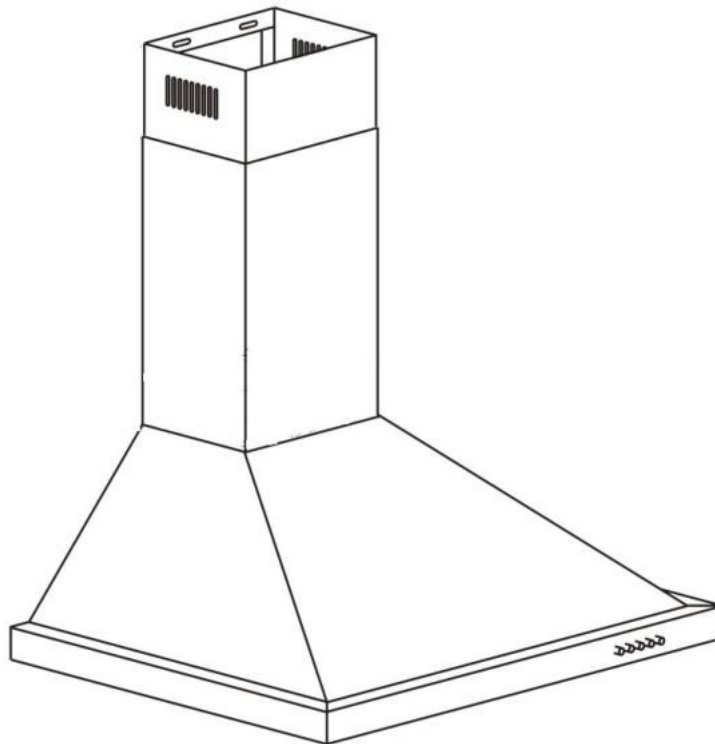


User Manual for your Classique

900mm Stainless Steel Canopy Rangehood

CLRH90LSS



NOTE: This user manual contains important information including safety & installation points which will enable you to get the most out of your Classique appliance. Please keep it in a safe place so that it is readily available for future reference.

Contents


Environmental note	1
Important safety information	2
Specifications of your rangehood	5
Using your rangehood	
Before first use	6
To use your rangehood	6
Cleaning your rangehood	
The grease filter	7
Maintenance	
Removing and cleaning the grease filter	8
Changing a light bulb	8
Fitting the carbon filter	9
Installation	
Electrical connection	10
Before beginning installation	11
Installing your rangehood	11
Fitting the chimney	13
Connecting to external ducting	15
Completing the installation	15
Packing list	16
Extraction mode or recirculation mode?	17
Troubleshooting	18

Environmental note

Note: Before discarding an old appliance, switch off and disconnect it from the power supply. Cut off and render any plug useless. Cut the cable off directly behind the appliance to prevent misuse. This should be undertaken by a competent person.

This appliance is marked according to the European directive 2002/96/EC on Waste electrical and Electronic Equipment (WEEE). By ensuring this product is disposed of correctly, you will help prevent potential negative consequences for the environment and human health, which could otherwise be caused by inappropriate waste handling of this product.



The symbol  on the product or on the documents accompanying the product indicates that this appliance may not be treated as household waste. Instead it shall be handed over to the applicable collection point for the recycling of electrical and electronic equipment.

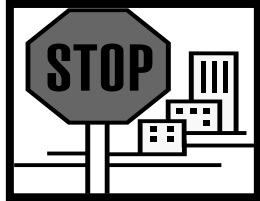
Disposal must be carried out in accordance with local environmental regulations for waste disposal. For more detailed information about treatment, recovery and recycling of this product, please contact your local city office or local waste management office.

- The packaging materials that we use are environmentally friendly and can be recycled.
- Please discard all packaging material with due regard for the environment.

Important safety information



Your safety is of the utmost importance to us. Please make sure that you read this instruction booklet **before** attempting to install or use the appliance. If you are unsure of any of the information contained in this booklet, please contact the Retailer where you purchased your unit from.



IMPORTANT: Any installation work must be carried out by a qualified electrician or competent person.

- The rangehood must be installed in accordance with the installation instructions and all measurements followed.
- If the rangehood is installed for use above a gas appliance then the provision for ventilation must be in accordance with the Gas Installations standard AS/NZS 5601.1 & 2:2013, the Gas Safety and Measurement Regulations 2010, and the Building (Specified Systems, Change the Use, and Earthquake-prone Buildings) Regulations 2005 issued under the Building Act 2004.
- It is dangerous to alter the specifications or to modify this product. Do not tamper with it or attempt to modify the appliance in any way.
- When installing the rangehood, ensure that the following recommended distances are observed between the highest point on the hob top (including the burners) and the bottom of the rangehood:

- | | |
|-----------------------------|---------------|
| ➤ Electric cookers: | 700 mm |
| ➤ Gas cookers: | 700 mm |
| ➤ Coal/ oil cookers: | 800 mm |

IMPORTANT: Do not set your rangehood less than 700mm above your cooker.

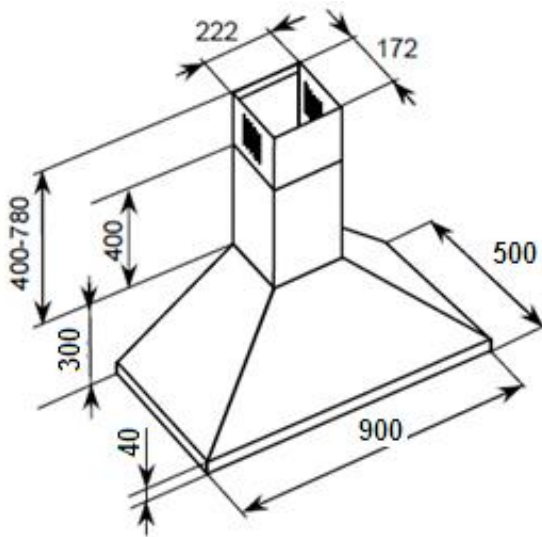
- When installed between adjoining wall cabinets, the cabinets must not overhang the hob.
- The edges of the rangehood are sharp – be mindful of this as you handle your appliance, especially during installation and cleaning. **DO NOT CLEAN IN BEHIND THE GREASE FILTERS!**
- If the room where the rangehood is to be used contains a fuel burning appliance such as a central heating boiler then its flue must be of the sealed or balanced flue type.
- If other types of flue or appliances are fitted, ensure that there is an adequate supply of air in the room.
- When the rangehood is being used in its extractor function, ensure that the ducting is fire retardant and that there are no bends sharper than 90 degrees as this will reduce the efficiency of the rangehood.
- Ensure the ducting for the extractor function has the same diameter as the outlet hole all the way through.
- Keep young children from using, playing with or tampering with the rangehood.
- Your rangehood is for domestic use only.
- Please dispose of the packing material carefully – children are especially vulnerable to it.
- Dirty oil is an even greater fire risk.
- Always put lids on pots and pans when cooking on a gas cooker.
- The manufacturer refuses to accept any responsibility for damages arising to the rangehood, including it catching on fire, due to a failure to observe the fire safety advice contained in this instruction booklet.
- Remember that when in extraction mode, your rangehood is removing air from your room. Ensure that proper ventilation measures are being observed.
- Note that the rangehood removes odours from your room, not steam.
- **Warning - Always ensure that the rangehood has been switched off before carrying out any work, including replacing light bulbs.**

- Do not connect the ducting system of this appliance to any existing ventilation system which is being used for any other purpose.
- Do not install above a cooker with a high level grill.
- Never leave frying pans unattended during use as overheated fats and oils might catch fire.
- The rangehood should not be exposed to a direct heat source from the cooking device underneath it, i.e. a naked flame from a gas burner or heat from electric hob zones **without** a pan on them.
- Do not attempt to use the rangehood if it is damaged in any way. Never attempt to use it without the grease filters fitted or if the filters are excessively greasy!
- Never flambé cook under this rangehood.
- The lights on this appliance should only be used during operation of the rangehood. They should not be left on permanently and used as a lighting source.

THE MANUFACTURER DECLINES ALL RESPONSIBILITY IN THE EVENT OF FAILURE TO OBSERVE THE INSTRUCTIONS GIVEN HERE FOR INSTALLATION, MAINTENANCE AND SUITABLE USE OF THE RANGEHOOD.



Specifications of your rangehood



Product dimensions

Height: 700mm* – 1080 mm

Width: 900 mm

Depth: 500 mm

Your rangehood is fitted with:

- Modern LED lighting (2 lamps)
- Easy-reach pushbutton controls
- 3 speed fan
- Brushed stainless steel finish
- 3 aluminium filters
- 54dB noise level
- Easy bracket installation
- 150mm diameter ducting outlet
- Extendable chimney flue

Extraction capacity: 500m³/hr

Optional extras: Recirculation possible with optional charcoal filter (ST1)

* If you are using the appliance in recirculation mode, then the minimum chimney height is 680 mm due to vent in the upper chimney section that needs to be exposed.

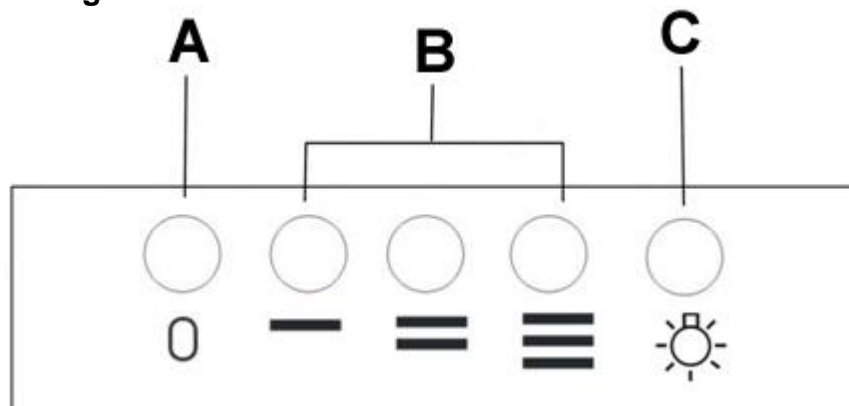
Using your rangehood

Before first use


IMPORTANT: This process must be followed before the rangehood is used for the first time.


You should use a mild liquid detergent and a damp cloth on all the external areas of your rangehood before it is used for the first time. This will help to remove any residues from the manufacturing process.


To use your rangehood



- **A** = ON/OFF button
- **B** = Speed selection buttons

 = Low speed

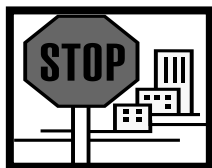
 = Medium speed

 = High speed

- **C** = Light on/off button
- Before operating the hood, make sure that it has been installed by a suitably qualified person, as per the information contained in the manufacturer's installation instructions.
- Find the control panel, which is located at the front right of the canopy.
- There are several buttons on the control panel, which perform separate functions.

IMPORTANT: Ideally you should switch on your rangehood ten minutes before you start to cook, or at the very least when you begin cooking. You should also run your rangehood for ten minutes after you have finished cooking.

Cleaning your rangehood



IMPORTANT: Before cleaning, always ensure that you have switched your rangehood off at the omni-polar switch, set at the wall from the cable.

Cleaning

- Clean the external parts of your rangehood with mild liquid detergent and a new damp cloth.
- Never use abrasive powder, corrosive solvents or brushes.
- Never insert pointed objects into the motor's protective grid.
- Only clean the control panel and grease filter grill with mild liquid detergents and a new damp cloth.
- If you are using the appliance in recirculation mode, then be sure to replace the carbon filters at the recommended interval (see section on "Fitting the carbon filter" on page 9). A build up of grease could cause a fire hazard.
- Never attempt to clean the area above the grease filter.

The Grease filter

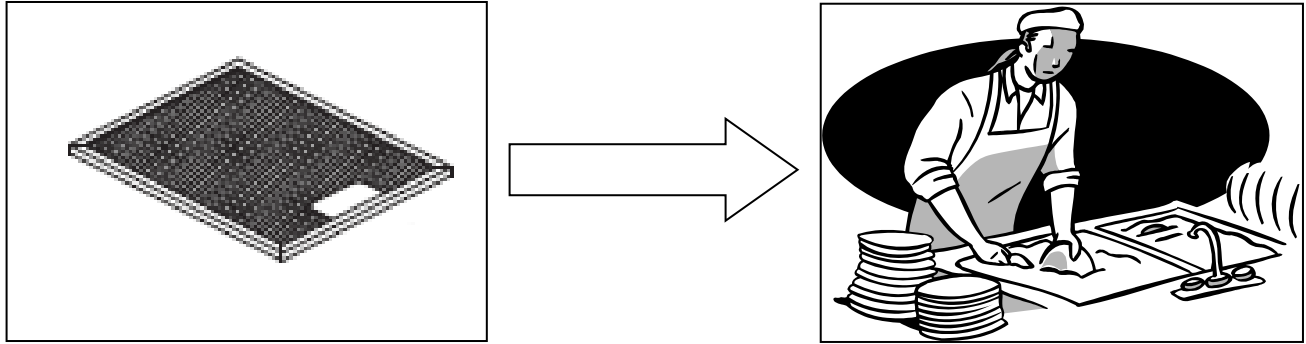
- Your rangehood includes a grease filter which helps to absorb grease particles to protect your kitchen and furniture from greasy residues.
- Your rangehood includes a metal filter which can be periodically washed.
- The filter may become flammable if it becomes saturated with greasy residue.
- To prevent this fire hazard, the metal filter should be cleaned regularly. Depending on use, this should be done every two months, using hot water and normal washing-up detergent.

IMPORTANT: Do not wash the grease filter in a dishwasher as the chemicals can cause damage.

Maintenance

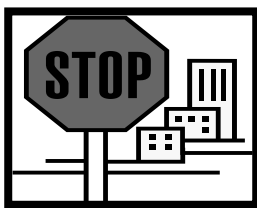
Removing and cleaning the grease filter

- First remove the grease filter by sliding the securing nibs at the sides of the grille on the underside of the cooker hood.



- Soak the grease filter in hot water and washing up liquid for about an hour.
- Rinse it off thoroughly with hot water.
- Repeat the process if required.
- **IMPORTANT:** Let the grease filter dry thoroughly before refitting it in the rangehood.
- Never attempt to use your rangehood without the grease filter in place.

Changing a light bulb (Part number: SYKL10 – LED LIGHT)

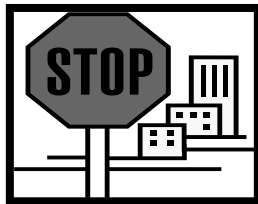


- **IMPORTANT – Always ensure the rangehood has been switched off before carrying out any work, including replacing light bulbs.**
- Prior to removing the LED light, ensure that it has cooled down.
- Remove the grease filter by sliding the securing nibs at the sides of the grill on the underside of the rangehood.
- Disconnect the internal plug leading to the LED light
- Squeeze the spring clips holding the LED light in place and draw the assembly out of the rangehood
- Replace in reverse order using **only** genuine spare part **SYKL10**.

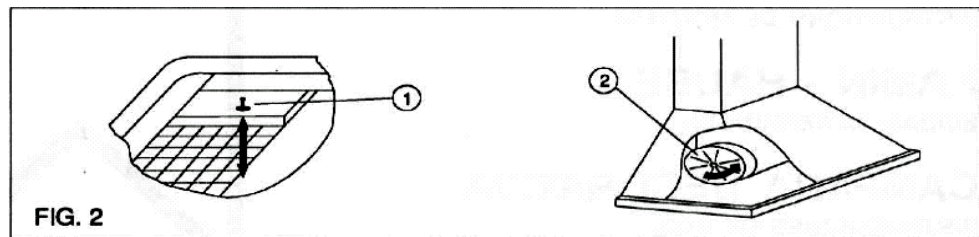
- **IMPORTANT:** Defective bulbs should be replaced immediately.
- If the light still does not work, make sure that the internal plug is fitted properly before you call for technical assistance.
- Refit the grease filter.

Fitting the carbon filter (Part number ST1)

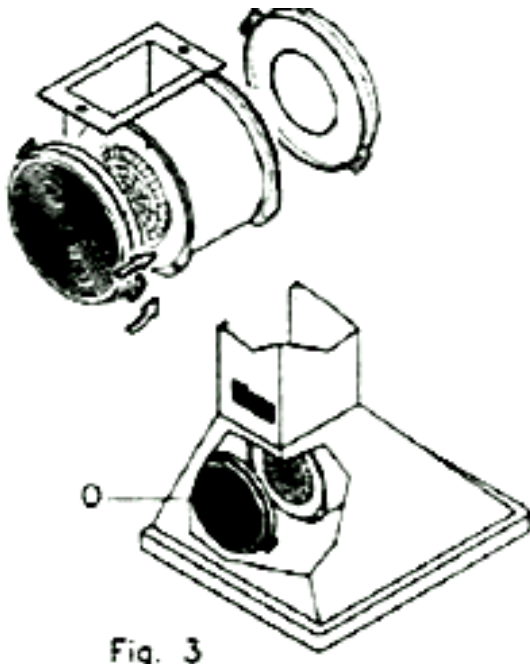
If the appliance is going to be used in recirculation mode then it is necessary to fit a carbon filter. This will help to absorb unpleasant odours caused by cooking.



IMPORTANT: Before attempting to fit or remove the carbon filters, you must ensure the rangehood is switched off first.

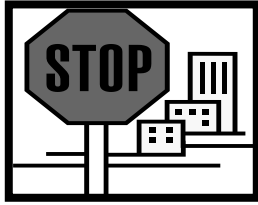


- 1) Press the handle of the metal grease filter towards the rear part of the unit until it is released from the front housing, and remove it by pressing downwards (Fig. 2 - above).



- 2) Remove the old carbon filters by twisting them anticlockwise until they unlatch from the sides of the motor.
- 3) Place the new carbon filters (which have two fixing tongues), turning clockwise so that the tongues latch onto the motor's sides (Fig. 3)
- 4) Reposition the metal grease filters.

Installation



IMPORTANT: Before installation read all the instructions and make sure that the voltage (V) and the frequency (Hz) indicated on the rating plate are exactly the same as the voltage and frequency in your home. The rating plate can be found behind the grease filters.

The manufacturer declines all responsibility in the event of the installer failing to observe all the accident prevention regulations in force, which are necessary for normal use and the regular operation of the electric system.

Electrical connection

Your rangehood is intended for fitting with power cord & plug for connection to 10A power outlet.

- The power cable must be connected to the terminals marked L (live) and N (neutral) in the rangehood and fixed with a cable clamp.
- The rangehood's power cable must be fitted upstream from the electrical connection using an omni-polar switch with a contact distance of at least 3mm.

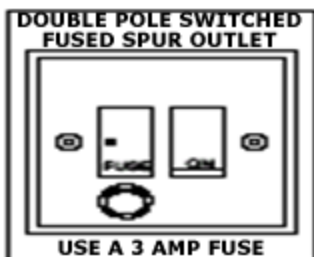
WARNING – THIS APPLIANCE MUST BE EARTHED!

We recommend that the appliance is connected by a qualified electrician, who is registered with the EWRB and who will comply with ALL regulations. The wires in the mains lead are coloured in accordance with the following UK code:

Blue = Neutral, Brown = Live, Green/Yellow = Ground

If you can only find two wires in the cable (blue and brown), neither must be connected to the Earth terminal!

- As the colours of the wires in the appliance's mains lead may not correspond with the coloured markings identifying the terminals in your spur box, please proceed as follows:



- The **blue wire** must be connected to the terminal marked "N" (neutral), or coloured **black**.
- The **brown wire** must be connected to the terminal marked "L" (live), or coloured **red**.
- The **green/yellow** wire must be connected to the terminal marked "E" or \equiv

Before beginning installation

- Check that the product purchased is of a suitable size for the chosen installation area. In addition, check whether there is an electrical socket available that will be accessible once the rangehood is mounted. If the product is going to be used in extraction mode, then there should also be space to connect a ducting hose to the outside.
- Carry out all necessary masonry work prior to the fitting of the rangehood.
- Ensure that all electrical connections are carried out by a suitably qualified person.
- Before commencing installation of the rangehood the grease filters should be removed.
- Check inside the product and ensure that there is no transit packaging or any other materials, such as packets of screws, guarantees etc. These should be removed and kept for future use.
- If possible, disconnect and move freestanding or slot-in cookers from their position, to provide easier access to the rear wall and ceiling. If this is not possible then a thick, protective covering should be placed over the worktop, hob top or cooker. This will help to protect these surfaces from damage and debris.
- Select a flat surface for assembling the rangehood. Cover that surface with a protective covering and place all rangehood parts and fittings on it.
- Do not tile, grout or silicone this appliance to the wall or cabinetry. This appliance is designed to be surface mounted only.

Installing your rangehood

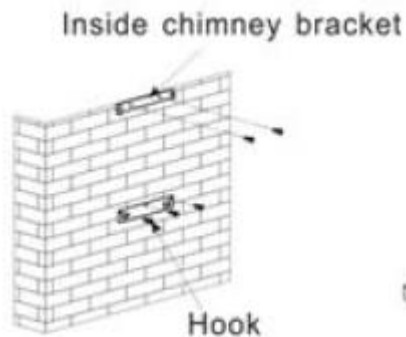
IMPORTANT: You will have to decide before installing your rangehood whether to use it in extraction mode or recirculation mode. Please refer to page 17 to understand the differences between these two modes.

- We recommend that at least two people install this rangehood.
- If you are using the appliance in recirculation mode, then PLEASE NOTE that all of the vent in the upper chimney section must be exposed. You will have to take this into account when calculating the minimum height of the extractor when installed.

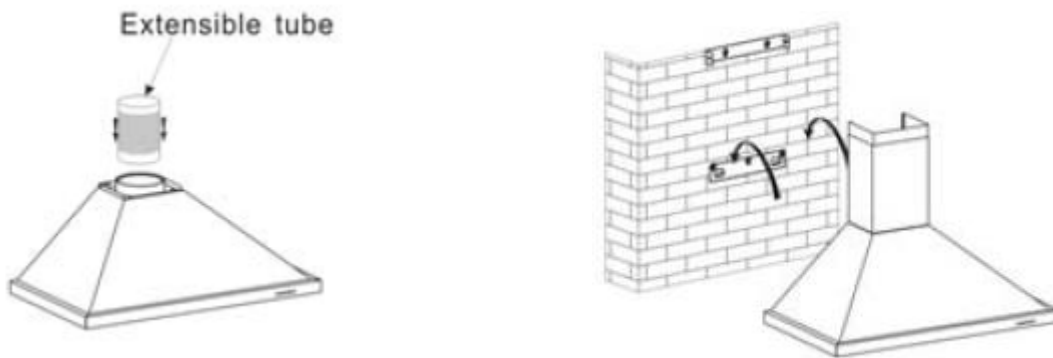
- **IMPORTANT: If the recirculation vents are obstructed then the efficiency of the extraction will be affected and could damage the motor.**

IMPORTANT: YOUR RANGEHOOD SHOULD BE CONNECTED TO YOUR MAINS SUPPLY AFTER THE REST OF THE INSTALLATION PROCESS HAS BEEN COMPLETED.

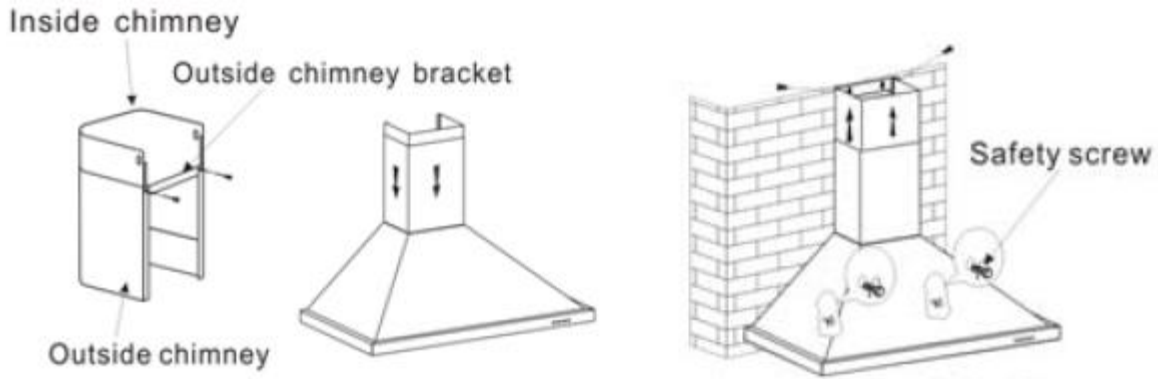
- 1) Determine the correct height for the hood and fix the hook. Ensure that the hook is level when fixed. Mark and fix the inner chimney bracket as described in the section “Fitting the chimney” on page 13.



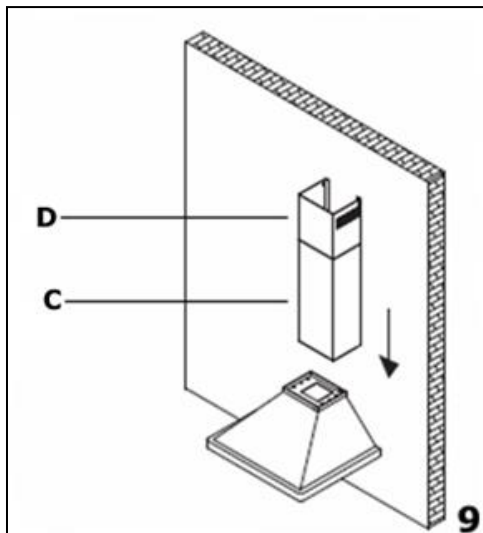
- 2) Fix the outer chimney bracket to the outer chimney ensuring that the inner chimney is free to slide to the required height and the exhaust ducting does not impede the movement. Then fit the exhaust ducting and the chimney assembly to the hood and hang on the hook.



- 3) Feed the exhaust ducting to your desired position then adjust the height of the inside chimney to the inner chimney bracket and screw in place. Once the position is fixed secure the unit with two safety screws through the Ø6mm holes in the back casing.

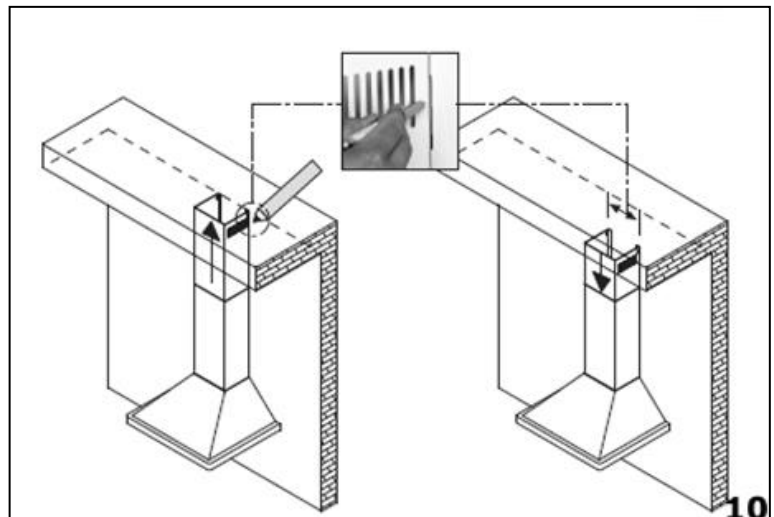


Fitting the chimney



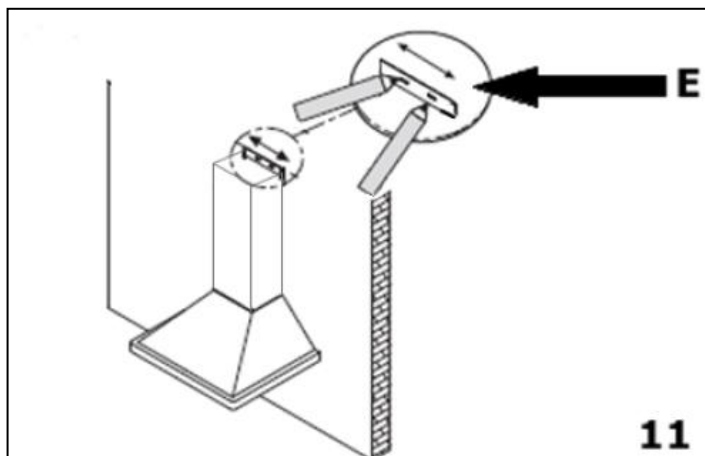
9) Take the two chimney sections **(C)** and **(D)**.

- Rest the bottom of chimney section **(C)** on the top of the hood. You should take care to position the tabs on the chimney section into the rear of the hood.
- Mark the side measurement of both sides of chimney section **(C)** on the wall with a pencil.



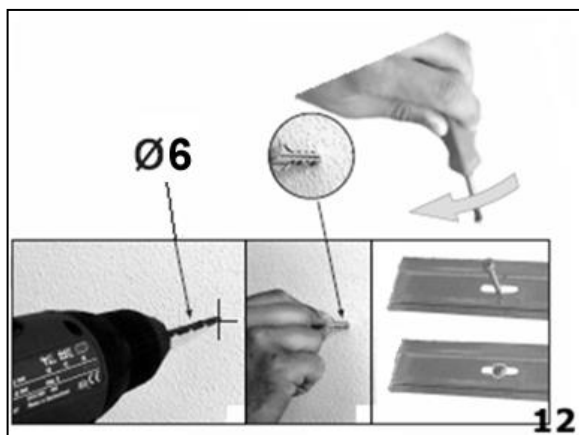
10) Lift chimney section **(D)** upwards until it reaches the ceiling. You must ensure that it is perpendicular to the hood.

- Mark the side measurements of both sides of chimney section **(D)** on the wall with a pencil and then remove chimney section **(D)**.



11) Take the flat bracket **(E)** and place it between the two pencil marks that you made in step 9.

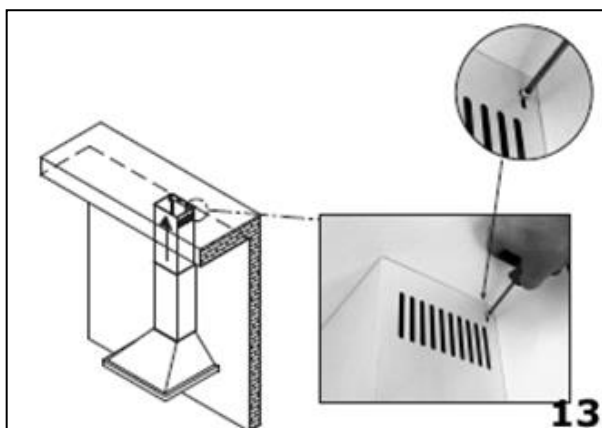
- Keeping the bracket in contact with the wall, use a pencil to mark on the wall the anchoring holes that are cut out of the bracket.



12) Using a 6 mm drill bit, drill two holes on the pencil markings that you made in step 10. Insert rawl plugs into the holes and then use a screwdriver to secure the fixing bracket to the wall.

- Refit chimney section **(C)** to the hood and fix it onto the hood using the two screws that are supplied.

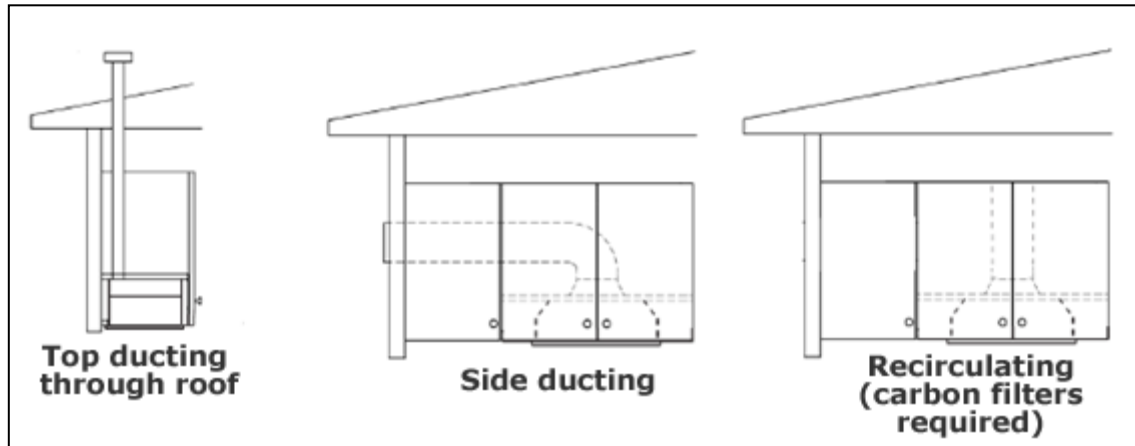
- Secure the top of chimney section **(C)** to the flat bracket, using the screws provided.



- Slide chimney section **(D)** inside of chimney section **(C)**. Then secure the L shaped bracket to the wall, using the same method as you have just used to secure the lower bracket.

13) Lift chimney section **(D)** up to the ceiling and secure it to the L shaped bracket using the screws provided.

Connecting to external ducting (top)



- Connect the coupling to the top of the rangehood, using two of the smaller screws provided (if side ducting, this is either through the wall or the Soffit).
- Connect a 150 mm ducting hose to a discharge outlet that is suitable for cooking vapours. Please note that the ducting hose is not supplied with the appliance but one can be obtained from the Retail outlet where you purchased your appliance.
- The maximum distance between the coupling and your discharge outlet should be 3 metres, with one 90 degree bend. For each additional 90 degree bend, the maximum distance is reduced by a further metre.
- Before fixing the rangehood into the kitchen unit, you should connect the other end of the ducting hose to the coupling in the top of the cooker hood.

Completing the installation

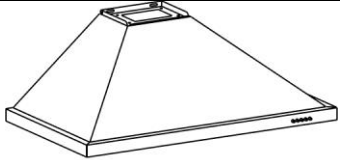
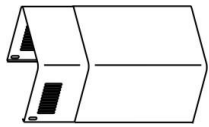
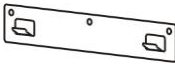




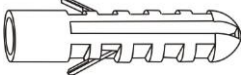
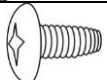
If you are setting the appliance to recirculation mode, then you should now fit the two carbon filters. See the section “Fitting the carbon filter” on page 9.

The electrical connection must correspond to the electrical requirement noted on the rating plate, which is placed inside the rangehood. The appliance should now be connected to the electrical supply. See page 10 for detailed information on the electrical connection.

Refit the grease filter and then switch on the mains supply to the appliance. Check that the appliance is operating correctly by selecting each speed and switching the light bulb on and off.

Packing List

Opening the box, you will find the following items :

Description	Illustration	Qty.
Cooker hood		1
Chimney		2
Wall bracket		1
Plate I		1
Plate II		1
Screw (4mm x 40mm)		7
Screw (4mm x 30mm)		2
Wall plug		9
Screw (4mm x 8mm)		6

Extraction mode or recirculation mode?

IMPORTANT: You will have to decide prior to installing your rangehood whether to use it in extraction mode or recirculation mode.

What is the difference between extraction and recirculation modes?

In extraction mode, the stale air will be taken via the grease filter and out of the room via external ducting.

In recirculation mode stale air is taken via the grease filter, and passed through a charcoal filter for purification. The air then re-enters the kitchen via an opening in the rangehood.

For optimum performance, we recommend that the rangehood is used in extraction mode and connected to external ducting.

Unfortunately if you live in a flat, or if the rangehood is too far from an outside wall, this may not be possible. The only alternative is to recirculate the air.

Do I need a charcoal filter?

All rangehoods have a grease filter but if you are using your rangehood in recirculation mode, then a charcoal filter must be fitted in addition to the grease filter.

Troubleshooting

IMPORTANT: *If your rangehood appears not to be operating properly, before contacting an authorised service agent, please refer to the checklist below.*



My rangehood will not start.

- Check that the rangehood is connected to the power supply and whether you have selected any of the fan speeds.



My rangehood is not working effectively.

- Check that the fan speed is set to an appropriate setting.
- Check that the grease filters are not dirty and do not require cleaning.
- If the rangehood is set up for recirculation mode, check that the carbon filter does not need to be replaced.
- If the rangehood is set up for extraction mode, check that the ducting hose and discharge outlet are not blocked.



My rangehood is noisy and/or vibrating.

- Check whether the installation has been completed as per the instruction booklet.
- It is normal to get a certain amount of noise and vibration, due to the extraction capacity of the rangehood.



Where do I go to get parts for my rangehood.

- If you need bulbs, filters, or semi-rigid aluminium ducting for your rangehood, please contact the retailer from where you purchased it, or visit www.classique.co.nz/service for more information.



My rangehood is not working properly.

Do not attempt to repair the appliance yourself. If the appliance is not operating correctly please contact an authorised service agent. Go to www.classique.co.nz or phone 0800 M10 HLP / 0800 610 457 to locate your closest service agent.

DO NOT ATTEMPT TO REPAIR THE APPLIANCE YOURSELF.



Please note that if a Technician is asked to attend whilst the product is under guarantee and finds that the problem is not the result of an appliance fault, then you may be liable for the cost of the call-out charge.

The appliance must be accessible for the Technician to perform any necessary repair. If your appliance is installed in such a way that an engineer is concerned that damage will be caused to the appliance or your kitchen, then the Technician will not complete a repair.

This includes situations where appliances have been tiled in, sealed in with sealant, have wooden obstructions placed in front of the appliance such as plinths, or where any installation other than the one specified by the manufacturer has been completed.

Please refer to the conditions of guarantee that appear on the warranty card that you receive with the appliance.

IMPORTANT: The manufacturer operates a policy of continuous improvement and reserves the right to adjust and modify its products without prior notification.

Congratulations on your new appliance purchase!
To help care for your investment, be sure to register your appliance online. Registration will help you if you need to arrange service in the future, and serves as a record of your purchase – including critical information like model number and serial number – that you can refer to at any time.
Simply visit the below website, or ask your retailer for help:

www.classique.co.nz/register

WARRANTY:

These products are covered by a warranty for a period of 24 months from the date of purchase, subject to the following conditions*. The warranty covers rectification free of charge of any fault arising from defective materials or components, or faulty workmanship or assembly.

* The conditions above mentioned are:

1. That the purchaser carefully follows all instructions packed with the product;
2. That the purchaser and/or installer carefully follows the installation instructions provided and complies with electrical wiring regulations, gas and/or plumbing codes;
3. That the purchaser carefully follows instructions provided in the owner's handbook relating to the proper use and care of the product and does not use the product for any purpose other than the domestic use for which it has been designed;
4. Commercial use of the product for professional or industrial purposes will void this warranty.;
5. That the product was purchased and installed in New Zealand;
6. That this warranty does not extend to:
 - a) optional glass lids for hobs apart from claims which relate to mechanical or physical damage thereof at the date of purchase;
 - b) 'consumable' parts such as light bulbs or filters;
 - c) damage to ceramic glass caused by liquid or solid spill-overs, lack of maintenance, or impact;
 - d) damage to surface coatings caused by cleaning or maintenance using products not recommended by the owner's handbook;
 - e) defects caused by normal wear and tear, accident, negligence, alteration, misuse or incorrect installations;

- f) a product dismantled, repaired or serviced by any serviceman other than an authorised service agent;
- g) a product not in possession of the original purchaser;
- h) damage caused by power outages or surges
- i) damage caused by pests (eg. rats, cockroaches etc.)

7. That if the product is a freestanding microwave oven or small appliance it must be returned to the dealer/retailer for servicing. These products, unless stated otherwise, have a 12 month warranty from original date of purchase with 24 months on the microwave magnetron; Waste disposers have a 12 month warranty.

8. The provision of service under this warranty is limited by a 25km boundary from the retailer where the product was purchased except for microwaves. Such travelling outside of these limits will incur commercial cost to be paid by you, regulated by the number of kilometres travelled beyond the 25km limit (50km return trip). Microwaves are to be delivered to the nearest authorised service agent by the customer.

Please refer to your user manual for any further conditions that may apply to your specific model.

Nothing herein contained shall be construed in any way as excluding or limiting your rights under the Consumer Guarantees Acts 1993.

For Service please visit www.classique.co.nz/service or contact the dealer/retailer from whom you purchased the product from or call the 0800 number listed below. If you are unable to establish the date of purchase, or the fault is not covered by this warranty, or if the product is found to be in working order, you will be required to bear all service call charges.

Registration of this warranty constitutes acceptance of the terms and conditions of this warranty.

Should you require any assistance, please call Customer Services on 0800 610 457.

Distributed by Applico Ltd.
www.classique.co.nz

September 2015

After registering your appliance online, we recommend you fill out the below information for your reference and keep this warranty card in a safe place.

PRODUCT:
RETAILER:
DATE OF PURCHASE:
INVOICE NO:
MODEL NO:

SERIAL NO*:

REGISTRATION WEBSITE DETAILS FOR
www.classique.co.nz/register

WEBSITE USERNAME:

WEBSITE PASSWORD:

*Please consult your user manual for guidance on finding the serial number.

THIS WARRANTY IS VALID IN NEW ZEALAND ONLY.

Classique

From one generation to the next Founded in 1974

Imported by Applico Ltd.

Private Bag 92900
Onehunga, Auckland 1061,
New Zealand

Website

www.classique.co.nz

Phone

0800 M10 HLP

or

0800 610 457